

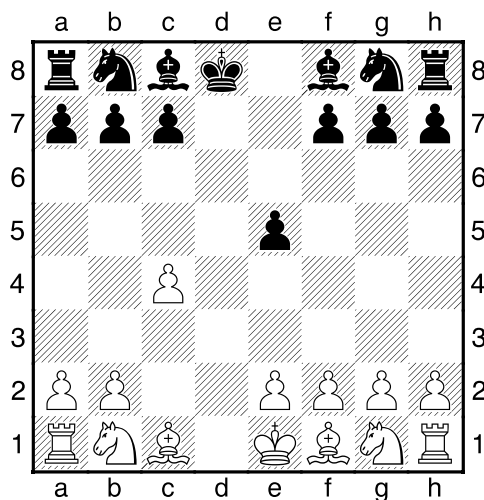
**(52) Theo,Verstappen - Piet,van Nassau [A41]**

17.12.2018

[Deep Fritz 14 x64 (15m)]

[A41: 1.d4 d6: Tartakower Systeem en Moderne Verdediging]

1.c4 d6 2.d4 e5 3.dxe5 dxex5 4.Dxd8+ Kxd8 [Diagram



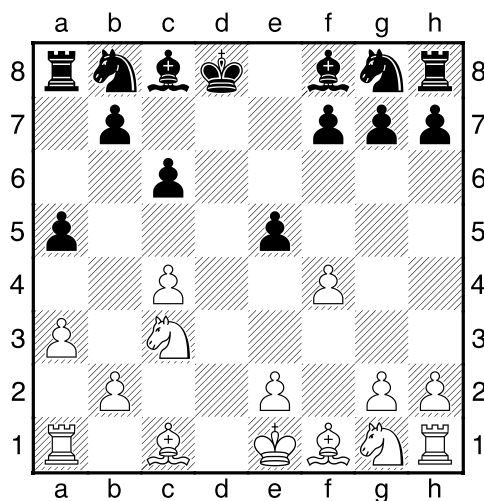
laatste zet uit boek]

5.a3 [Zekert b4]

5...a5 [Wit's positie is in het nauw. Wit kan zijn figuur niet verzetten: f1]

6.Pc3 e6 [Dekt b5+d5]

7.f4 [Diagram



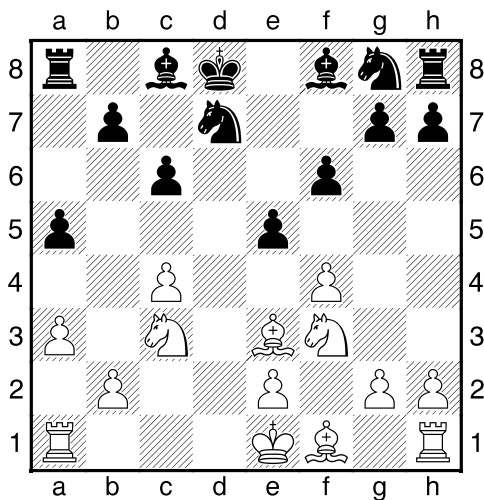
Wit dreigt met materiaalwinst: f4xe5]

[7.e4 Ph6²]

7...Pd7= 8.Pf3 f6 [Beheerst g5]

[8...Ld6 9.fxe5 Pxe5 10.Pe4=]

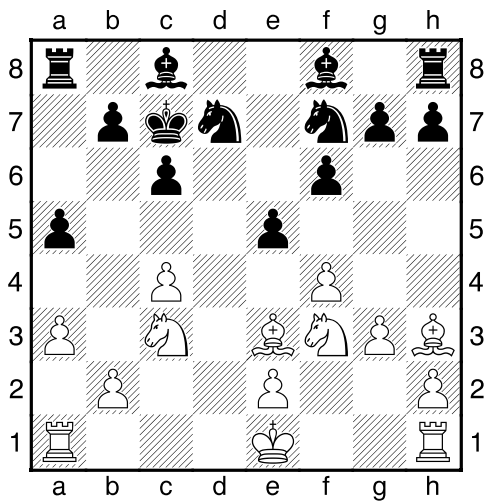
9.Le3 [Diagram



]

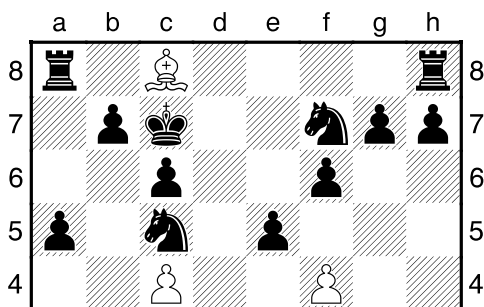
[9.fxe5 Pxe5 10.e4 a4²]

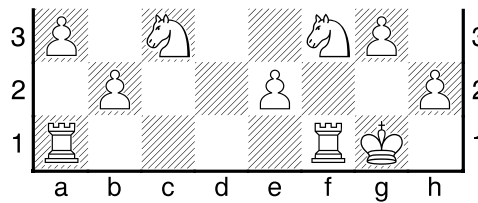
9...Kc7 10.g3 Ph6 11.Lh3 Pf7 [Diagram



]

12.0-0 Lc5 13.Lxc5 Pxc5 14.Lxc8 [Diagram



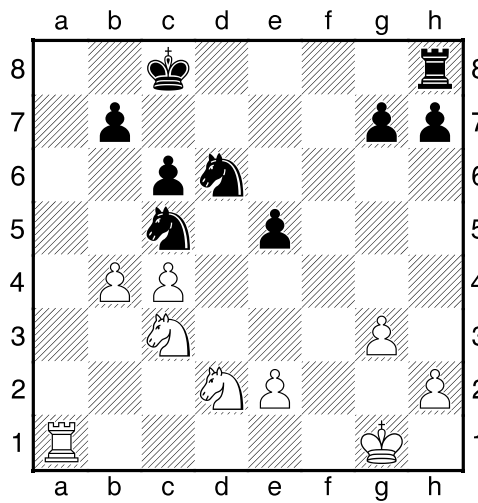


]

14...Kxc8 [14...Thxc8 15.fxe5 fxe5 16.b4 axb4 17.axb4=]

15.fxe5<sup>2</sup> fxe5 [De veiligheid van de witte koning is verbeterd. ]

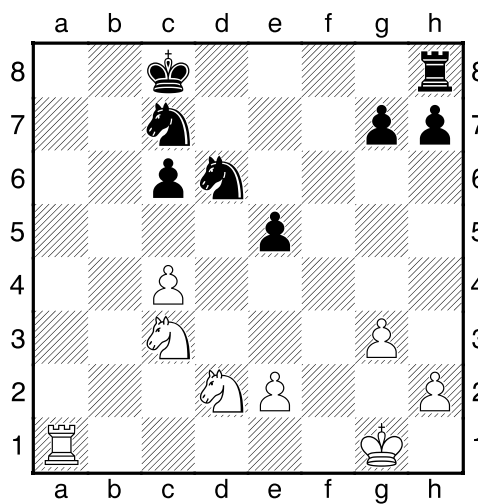
16.Pd2 Pd6 17.b4 axb4 18.axb4 Txa1 19.Txa1 [Diagram



]

19...Pa6 20.b5 [Wit wint ruimte.]

20...Pc7 21.bxc6 bxc6 [Diagram

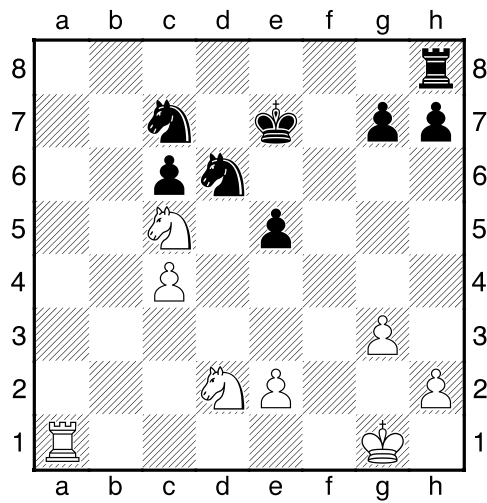


]

22.Pa4 Kd7 [22...Te8 23.Pb6+ Kb7 24.c5²]

23.Pc5± [Een riante positie voor het witte paard.]

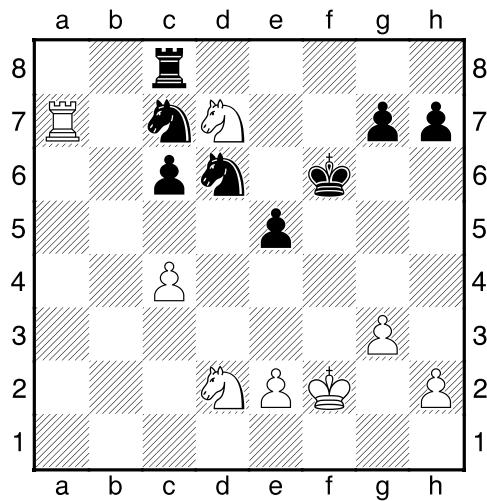
23...Ke7 [Diagram



]

24.Ta7 [Wit dreigt met materiaalwinst: Ta7xc7]

24...Tc8 25.Kf2 Kf6 26.Pd7+ [Diagram



]

[26.Pd7+ Ke6 27.Pb6 Tf8+ 28.Pf3²]

1-0